

# AEC Premier Coconut<sup>TM</sup>

## Coconut Erosion Control Blanket

# AEC Premier Straw/Coconut<sup>TM</sup>

## 70% Straw - 30% Coconut Blend Erosion Control Blanket

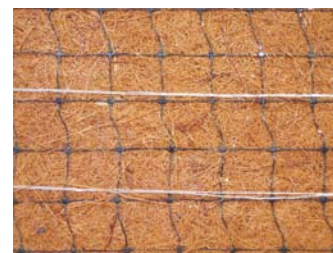
American Excelsior Company realizes project owners, consultants, specifiers, and landscape contractors wish to have a choice when selecting erosion control blankets. That is why American Excelsior Company, the inventor of biodegradable erosion control blankets, manufactures straw, straw/coconut, coconut, and excelsior blankets. Our AEC Premier Blanket manufacturing process starts with choosing only top quality, certified weed seed free, agricultural straw fibers or top quality strands of coconut fiber. The AEC Premier Straw/Coconut blend and the AEC Premier Coconut blankets are designed for mid to long-term erosion protection and vegetation establishment for slopes, channels, and shorelines. The AEC Premier Straw/Coconut blanket combines 70% straw with 30% coconut to create a longer life blanket than standard AEC Premier Straw<sup>®</sup> blankets. The AEC Premier Coconut blanket will provide a longer life degradable blanket for severe applications or where special seed mixes need long-term protection. Both of these Premier products have longer duration photodegradable, UV enhanced nettings on both sides. Our FibreNet<sup>TM</sup> - 100% biodegradable netting - is available for environmentally sensitive areas, while maintaining performance standards.

### MATERIAL CHARACTERISTICS

AEC Premier Straw/Coconut and AEC Premier Coconut blankets are degradable erosion control blankets consisting of the finest certified weed seed free agricultural straw fibers and the highest quality strands of coconut fiber. By adding 30% coconut fibers to the AEC Premier Straw blanket the straw/coconut blend of fibers can extend the degradable life up to 24 months depending on job site conditions. AEC Premier Coconut can provide a longer erosion protection life up to 36 months depending on job site conditions. Lightweight and easy to handle, you can rely on AEC Premier Straw/Coconut and AEC Premier Coconut blankets to provide a high degree of erosion protection and longer life than single or double net straw blankets. AEC Premier blankets are available individually wrapped or in master packs to allow for mechanical unloading and stacking.

### PERFORMANCE CAPABILITIES

Product	Slopes	Netting Type	Shear Stress Rating
AEC Premier Straw/Coconut	1.5H:1V & flatter	Top - UV Stabilized Black, Bottom - UV Stabilized Green, FibreNet <sup>TM</sup>	96 Pa 2.00 lb/ft <sup>2</sup>
AEC Premier Coconut	1H:1V & flatter	UV Stabilized Black, FibreNet <sup>TM</sup>	108 Pa 2.25 lb/ft <sup>2</sup>



### TYPICAL APPLICATIONS

- Utility transmission right-of-way
- Highway construction
- Slope stabilization
- Landfill construction
- Urban drainage
- Stream banks
- Waterways



### SUGGESTED SPECIFICATIONS

#### Product

##### AEC Premier Straw/Coconut Blanket

AEC Premier Straw/Coconut blankets, as manufactured by American Excelsior Company, shall be made from the finest quality, certified weed seed free, agricultural straw and top quality strands of coconut fiber. The coconut fibers shall be blended into the straw blanket to comprise 30% of the total weight of the blanket. The coconut and straw fibers shall be evenly distributed in blanket form and stitched to a UV enhanced black net on top and a UV enhanced green net on bottom. The blanket performance shall be supported by an ASTM protocol test result.



##### AEC Premier Coconut Blanket

AEC Premier Coconut blanket, as manufactured by American Excelsior Company, shall be made from the finest quality strands of coconut fiber. AEC Premier Coconut shall be comprised of coconut fiber. The coconut fiber shall be evenly distributed in blanket form and stitched to top and bottom heavy duty UV enhanced black nettings. The blanket performance shall be supported by an ASTM protocol test result.



Properties common to both AEC Premier Straw/Coconut & AEC Premier Coconut:

Weight*:	0.27 kg/m <sup>2</sup>	0.50 lb/yd <sup>2</sup>
Roll Dimensions:	2.4 m x 34.3 m	8.0 ft x 112.5 ft
Roll Area:	83.6 m <sup>2</sup>	100.0 yd <sup>2</sup>

\*Weight is based on a dry fiber weight basis at time of manufacture. Baseline moisture content of AEC Premier Straw and AEC Premier Coconut fibers are 15% and 20%, respectively.



#### Installation

Before installing AEC Premier Straw/Coconut or AEC Premier Coconut erosion control blankets, the seedbed shall be inspected by the Owner's Representative to ensure it has been properly compacted and fine graded to remove any existing rills. It shall be free of obstructions, such as tree roots, projections such as stones, and other foreign objects. The contractor shall proceed when satisfactory conditions are present. After the area has been properly shaped, seeded, fertilized, and compacted, the AEC Premier erosion control blanket shall be removed from the bag. Next, locate the start of the roll, making sure the roll is facing toward the area to be covered, and then roll out the blanket. The blankets shall be rolled out flat, even, and smooth without stretching the material.

Slopes: It is recommended the blankets be installed vertically on the slope; however, on short slopes it may be more practical to install horizontally across the width of the application. If more than one width is required, overlap the edges and secure the blankets with a common row of staples. AEC Premier erosion control blankets shall be trenched at the head of the slope if the blanket cannot be extended three feet over the slope crest or if overland flow is anticipated from upslope areas.

Channels: AEC Premier erosion control blankets shall be centered to offset a seam in the middle of the waterway. They shall be installed in the same direction as the water flow. The adjoining blankets shall be installed away from the center of channel and overlapped. Blanket installation shall continue up the side slopes and three feet over the crest to the flat of the final grade. Flanks exposed to runoff, or sheet flow, must be protected by a check slot or trenched. AEC Premier erosion control blankets shall be trenched at the start of the channel and anchored using a staggered staple pattern at end of roll overlaps and end of roll terminations.

Disclaimer: AEC Premier Straw/Coconut and AEC Premier Coconut are systems for erosion control and revegetation on slopes and channels. American Excelsior Company (AEC) believes that the information contained herein to be reliable and accurate for use in erosion control and revegetation applications. However, since physical conditions vary from job site to job site and even within a given job site, AEC makes no performance guarantees and assumes no obligation or liability for the reliability or accuracy of information contained herein for the results, safety, or suitability of using AEC Premier Straw/Coconut and AEC Premier Coconut, or for damages occurring in connection with the installation of any erosion control product whether or not made by AEC or its affiliates, except as separately and specifically made in writing. These specifications are subject to change without notice.

**DX2 Geosyntex, Inc.**

**307 Industrial Park Dr., Lawrenceville, Georgia 30046**

**770-682-1758 Fax 770-339-0223**

**[www.dx2.net](http://www.dx2.net)**

